

# Faune et flore des carrières

Philippe Schweich – septembre 2013

# FAUNE & FLORE D'EAU DOUCE

\* : 1-5 mm    \*\* : 5-20 mm    \*\*\* : >20 mm

## PLANTES

- Cératophylle  
*C. demersum*
- C. submersum  
*C. submersum*
- Potamot  
*Potamogeton sp.*
- Elodée du Canada  
*Elodea canadensis*
- Elodée de Nuttall  
*Elodea nuttallii*
- Myriophylle  
*Myriophyllum sp.*
- Nénuphar  
*Nymphaeaceae*

## SPONGIAIRES

- \*\*\* Eponge d'eau douce  
*Spongillidae*

## CNIDAIRES

- \*\* Méduse d'eau douce  
*Craspedacusta sowerbii*
- \* Hydre  
*Hydridae*
- \*\*\* *Cordylophora caspia*
- \* polype

## ANNELIDES

- \*\* Tubifex  
*Tubifex tubifex*
- \*\*\* Sangsue  
*Hirudinea*

## MOLLUSQUES

- \* Ancylus  
*Ancylus fluviatilis*
- \*\* Planorbe  
*Planorbidae*
- \* Physa  
*Physidae*
- \*\*\* Limnée + \*\* ponte  
*Lymnaeidae*
- \*\*\* Bithynie + \*\* ponte  
*Bithyniidae*
- \*\* Valvata  
*Valvatidae*
- \*\* Nérítine  
*Theodoxus fluviatilis*
- \*\*\* Moule zébrée  
*Dreissena polymorpha*
- \*\*\* Anodonte  
*Anodonta cygnaea*
- \*\*\* Mulette des peintres  
*Unio pictorum*
- \*\* Corbicula sp.

## BRYOZOAIRES

- \*\*\* *Cristatella mucedo*
- \*\*\* *Plumatella funghosa*
- \*\*\* *Fredericella sultana*
- \* polypide

## PLATHELMINTHES

- \*\* Planaire + \* ponte  
*Tricladidae*

## ACARIENS

- \* Hydracarien  
*Hydrachnidae*

## CRUSTACÉS

- \* Copépode  
*Copepoda*
- \* Puce d'eau  
*Cladocera*
- \* Ostracode  
*Ostracoda*
- \*\* Gammare  
*Gammaridae*
- \*\* Aselle aquatique  
*Asellidae*
- \*\*\* *Atyaephyra desmarestii*
- \*\*\* Ecrevisse à pattes rouges  
*Astacus astacus*
- \*\*\* Ecrevisse américaine  
*Orconectes limosus*
- \*\*\* Ecrevisse à pattes grêles  
*Astacus leptodactylus*



© Guy Trompet & François Darchambeau

# INSECTES

\* : <1 cm    \*\* : 1-2 cm    \*\*\* : >2 cm

- \* Larve de Moustique  
*Culicidae*
- \* Pupa de Moustique  
*Culicidae*
- \*\* Larve de cristal  
*Chaoboridae*
- \*\* Ver de vase  
*Chironomidae*
- \*\*\* Larve de Sialis  
*Sialis lutaria*
- \*\* Nympe d'Ephémère  
*Ephemeroptera*
- \*\*\* Nympe de Demoiselle  
*Odonata Zygoptera*
- \*\*\* Nympe de Libellule  
*Odonata Anisoptera*
- \* Gyrin adulte  
*Gyrinidae*
- \*\*\* Dytique adulte  
*Dytiscidae*
- \*\*\* Larve de Dytique  
*Dytiscidae*
- \*\*\* Larve de Phrygane  
*Trichoptera*
- \*\*\* Hydromètre  
*Hydrometra stagnorum*
- \*\* "Araignée" d'eau  
*Gerris sp.*
- \*\* Corise  
*Corixidae*
- \*\* Notonecte  
*Notonecta glauca*
- \*\*\* Nèpe aquatique  
*Nepa cinerea*
- \*\*\* Ranâtre linéaire  
*Ranatra linearis*

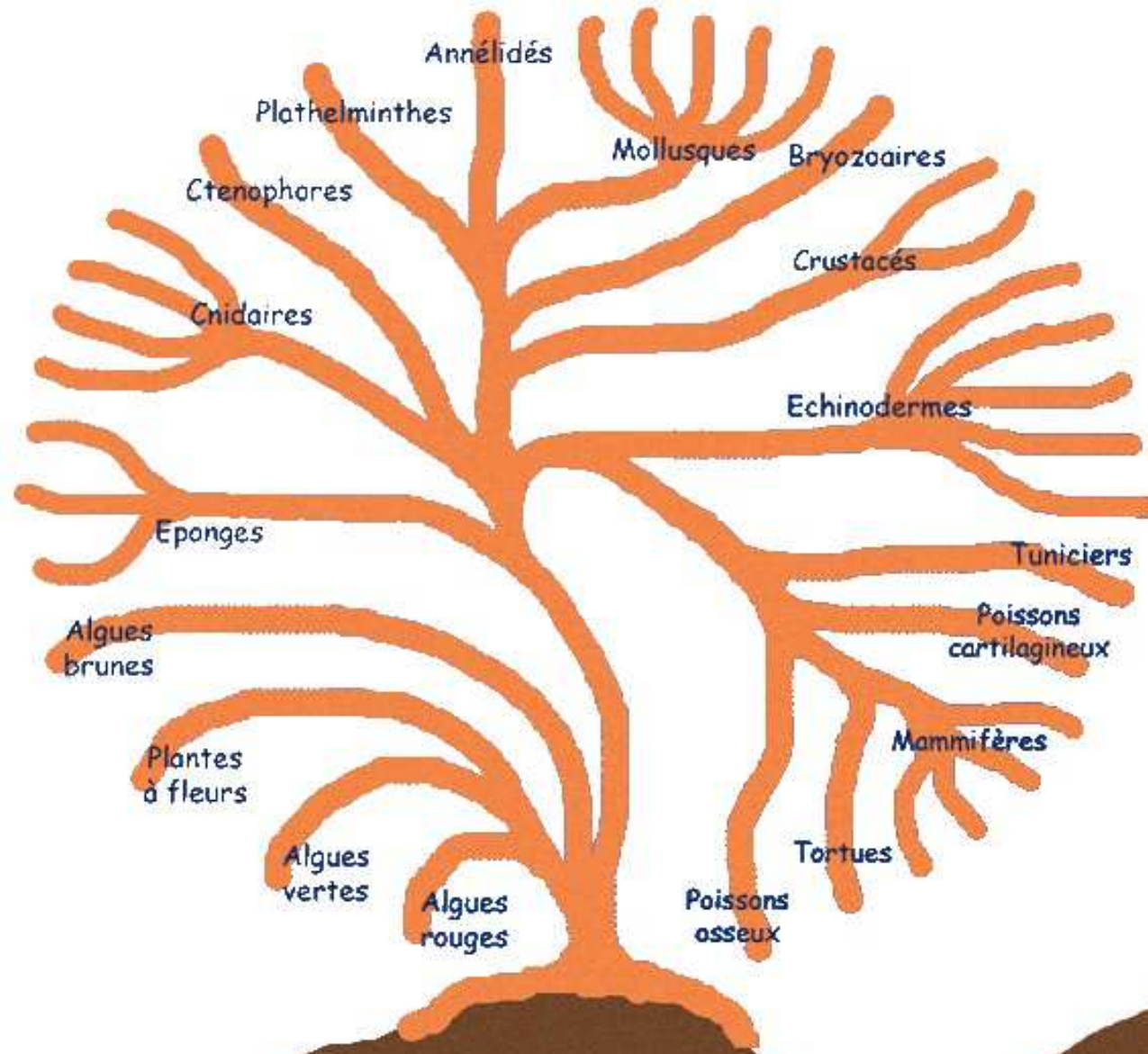
# POISSONS

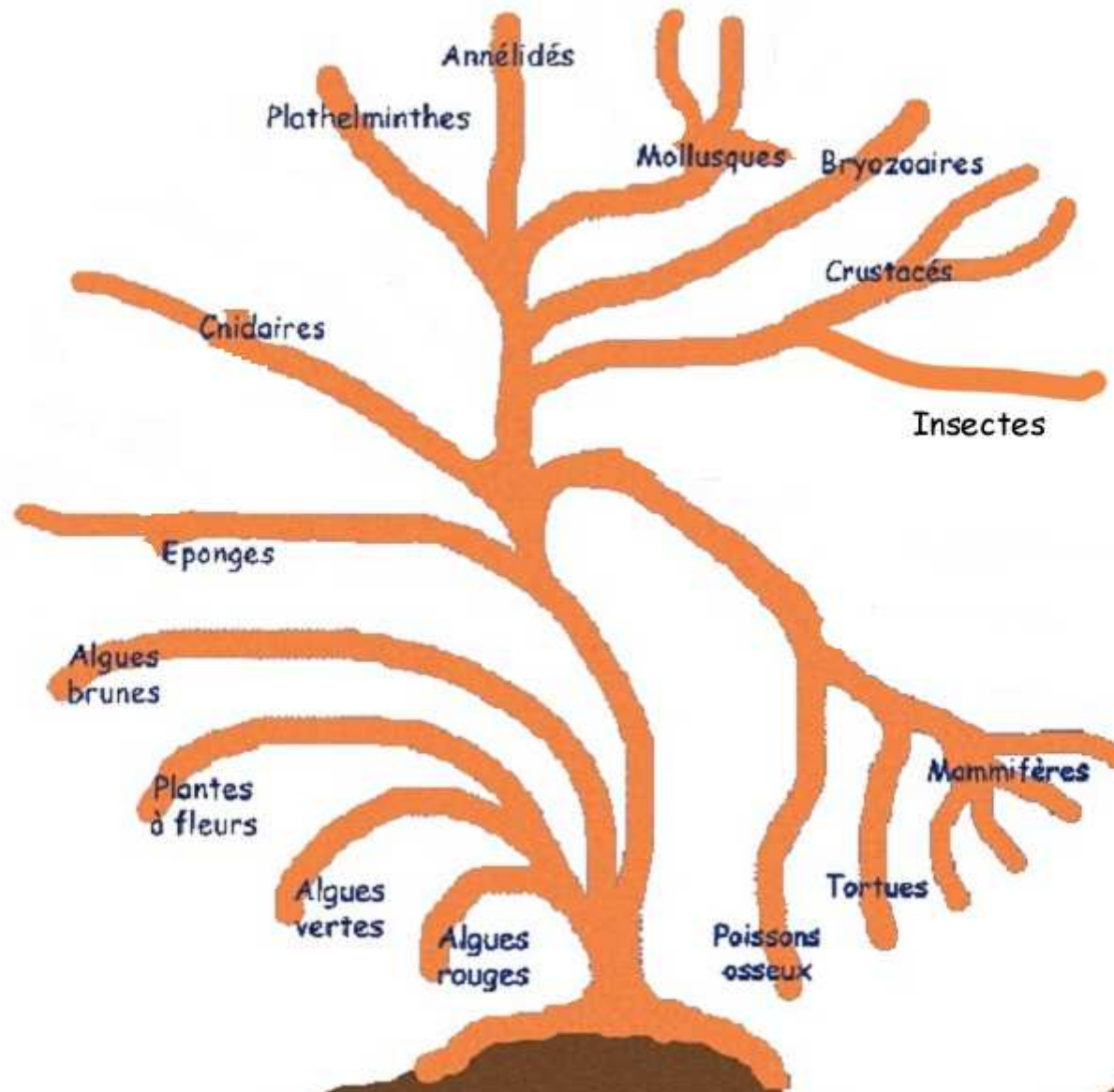
\* : <15 cm    \*\* : 15-50 cm    \*\*\* : >50 cm

- \*\* Flet  
*Platichthys flesus*
- \*\*\* Anguille  
*Anguilla anguilla*
- *Acipenser ruthenus*
- \*\*\* Sterlet
- \*\*\* Silure glane  
*Silurus glanis*
- \* Goujon  
*Gobio gobio*
- \* Chabot  
*Cottus gobio*
- \* Loche franche  
*Barbatula barbatula*
- \*\*\* Truite arc-en-ciel  
*Oncorhynchus mykiss*
- \*\*\* Brochet  
*Esox lucius*
- \*\* Perche  
*Perca fluviatilis*
- \* Grémille  
*Gymnocephalus cernuus*
- \*\*\* Sandre  
*Sander lucioperca*
- \*\* Perche-soleil  
*Lepomis gibbosus*
- \*\*\* Carpe commune  
*Cyprinus carpio carpio*
- \*\*\* Carpe miroir  
*Cyprinus carpio carpio*
- \*\*\* Carpe cuir  
*Cyprinus carpio carpio*
- \*\* Barbeau fluviatile  
*Barbus barbus*
- \*\* Tanche  
*Tinca tinca*
- \*\* Brème commune  
*Abramis brama*
- \* Vairon  
*Phoxinus phoxinus*
- \*\*\* Ablette  
*Alburnus alburnus*
- \*\* Chevaîne  
*Leuciscus cephalus*
- \*\* Gardon  
*Rutilus rutilus*
- \*\* Rotengle  
*Scardinius erythrophthalmus*

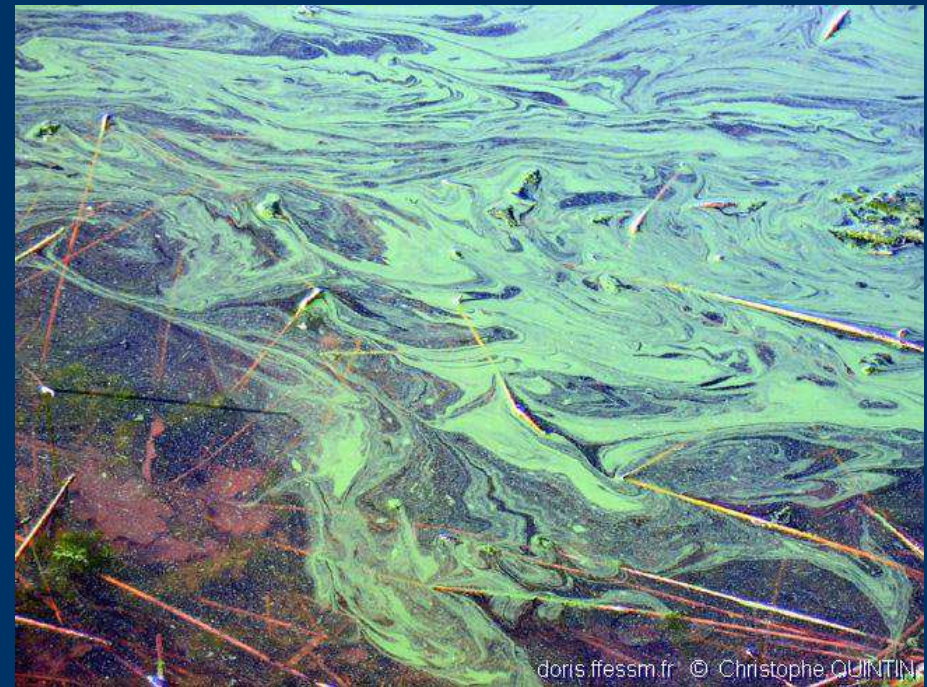
© Guy Trompet & François Darchambeau

● Espèce exotique





# Bactéries photosynthétiques = Cyanobactéries



# Algues vertes



Cladophores



Algues vertes filamenteuses

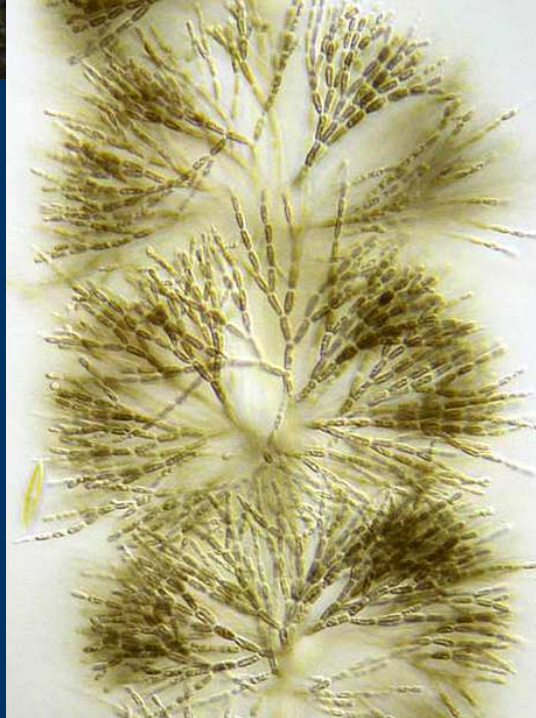
*Spyrogyra*

# Algues vertes



*Chara*

# Algues rouges



*Batrachospermum*



# Plantes à fleurs

## Elodée du Canada



Verticille de 3 feuilles

## Elodée de Nuttall



Verticille de 3, 4, 5  
feuilles, recourbées  
à l'extrémité

## Lagarosiphon



Feuilles alternes

# Plantes à fleurs



Ceratophylle  
(Cornifle)



Myriophylle

# Plantes à fleurs



Potamot crèpu

# Protistes (unicellulaires)

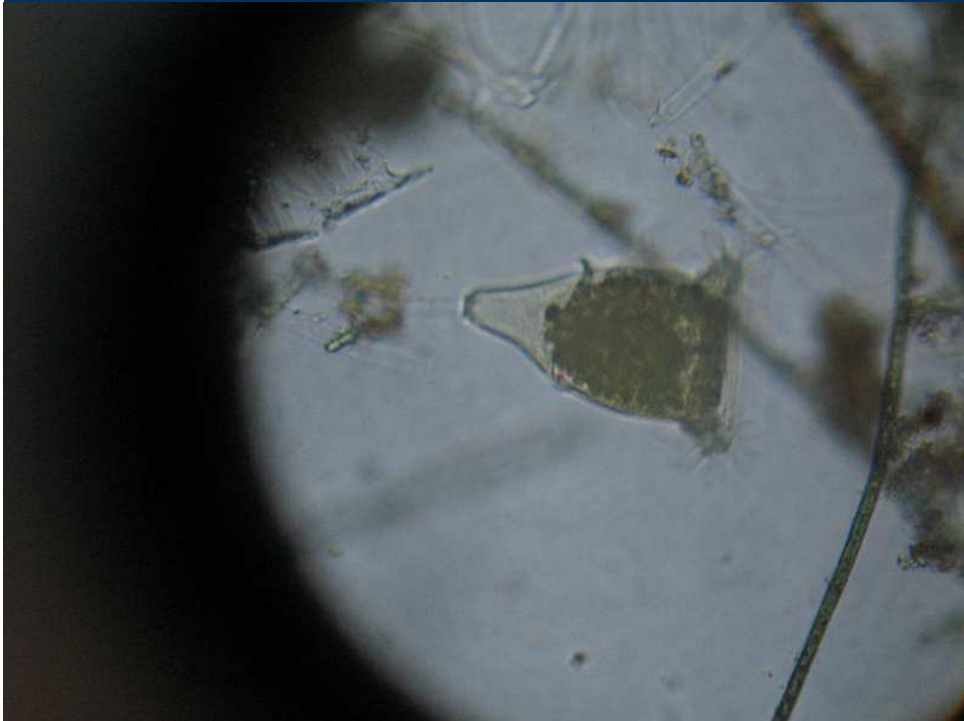


Vorticelles

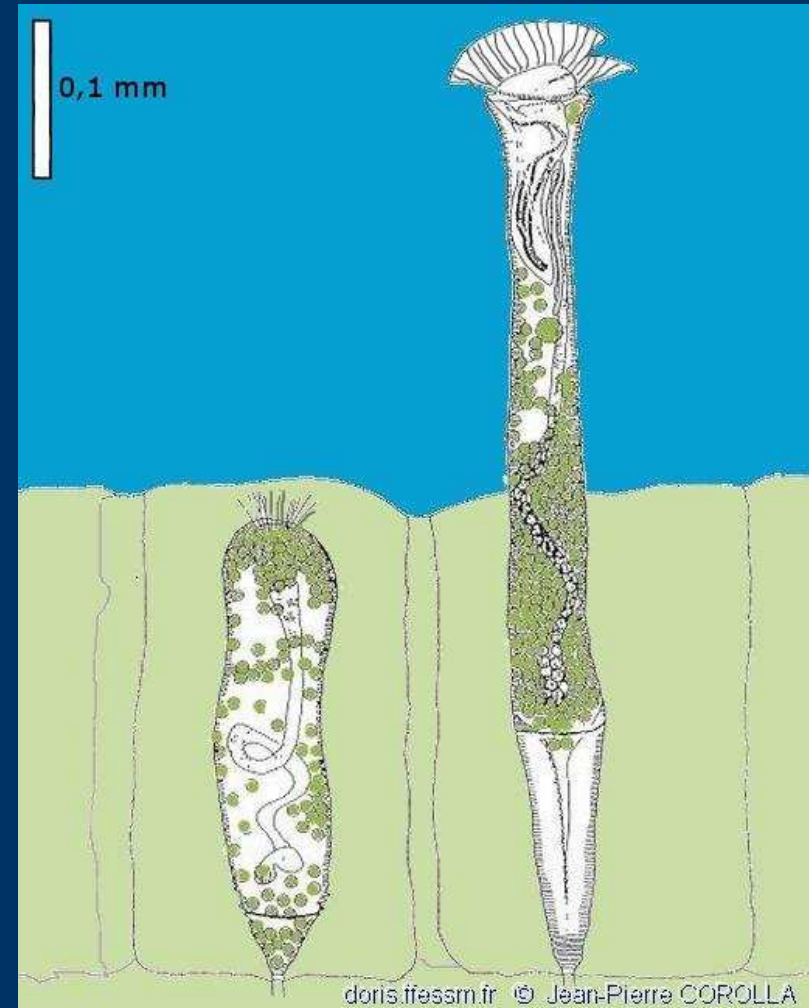


Ophrydium

# Protistes (unicellulaires)



Vorticelles



Ophrydium

# Eponges (démosponges)



Forme encroûtante



Gemmules



# Cnidaires (hydrozoaires)



Hydres



# Cnidaires (hydrozoaires)

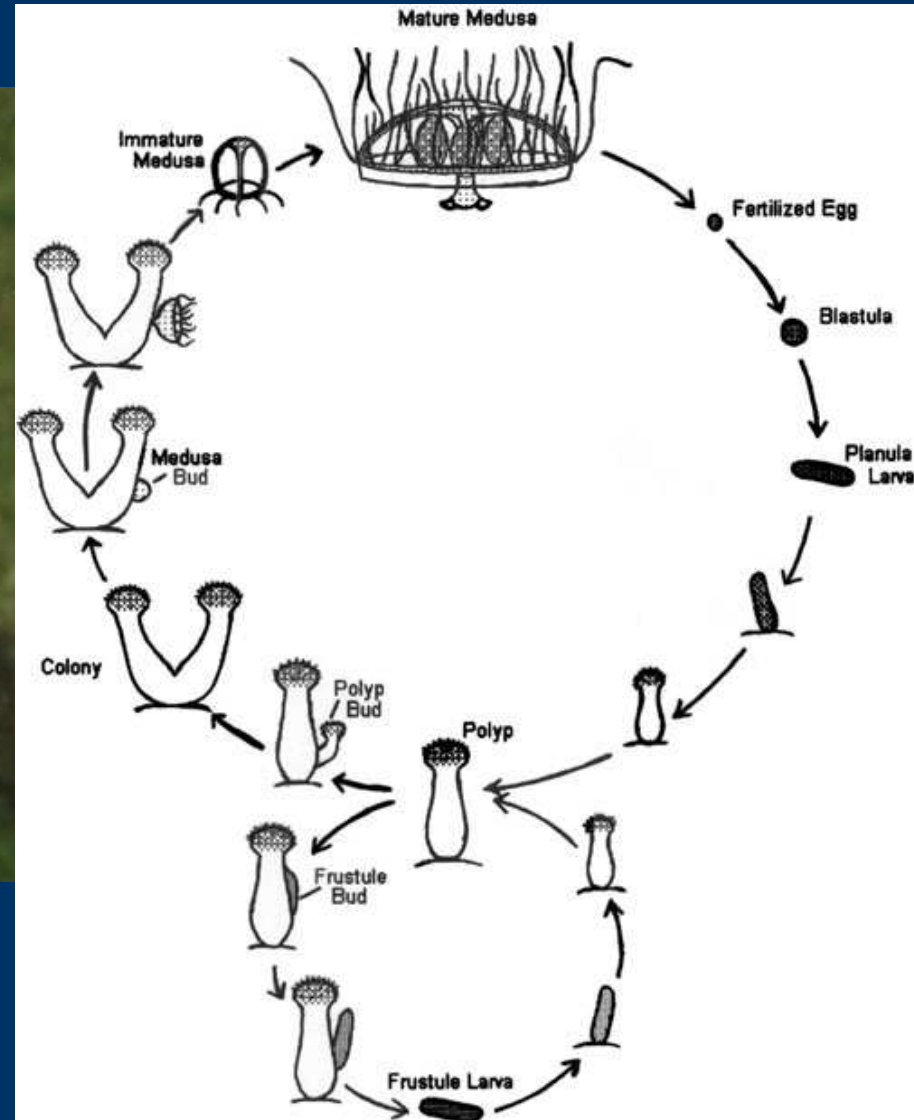


*Cordylophora caspia*

# Cnidaires (hydrozoaires)



*Craspedacusta sowerbii*



# Plathelminthes (Planaires)



Planaire lactée :  
*Dendrocoelum lacteum*



# Annelides : sangsues



*Piscicola*



*Glossosiphonia*



*Erpobdella*

# Mollusques

Chiton

Gastéropodes

Bivalves

Céphalopodes

Pulmonés

Prosobranches

opisthobranches

# Mollusques

Gastéropodes

Bivalves

Pulmonés

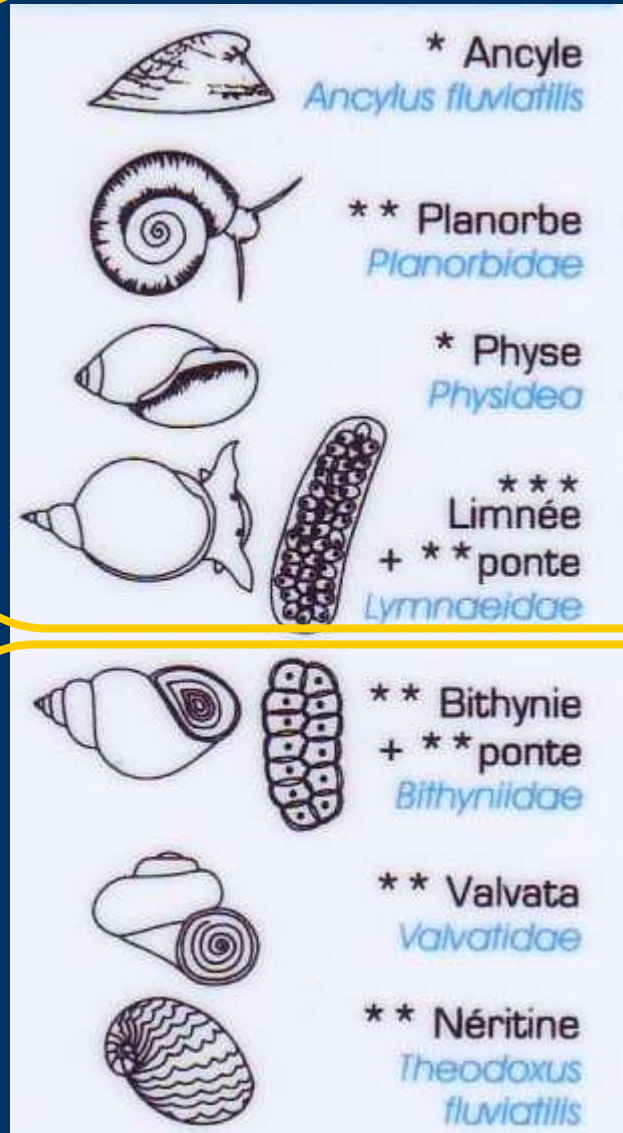
Prosobranches

Pas  
d'opercule

Opercule

# Mollusques

## Pulmonés



## Bivalves

## Prosobranches

Limnée



Physe



Planorbe



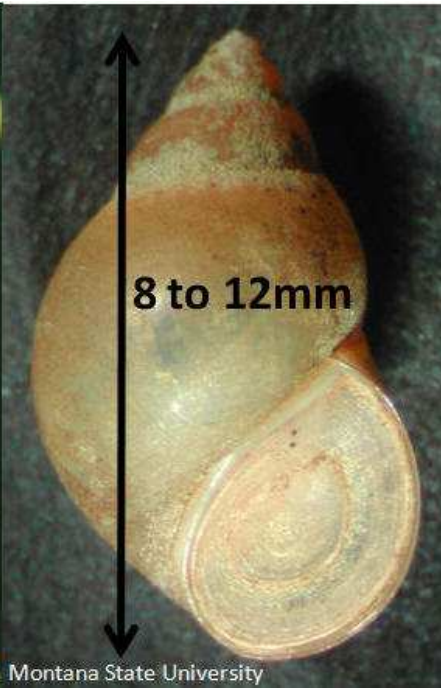
Ancyle







www.anemoon.org



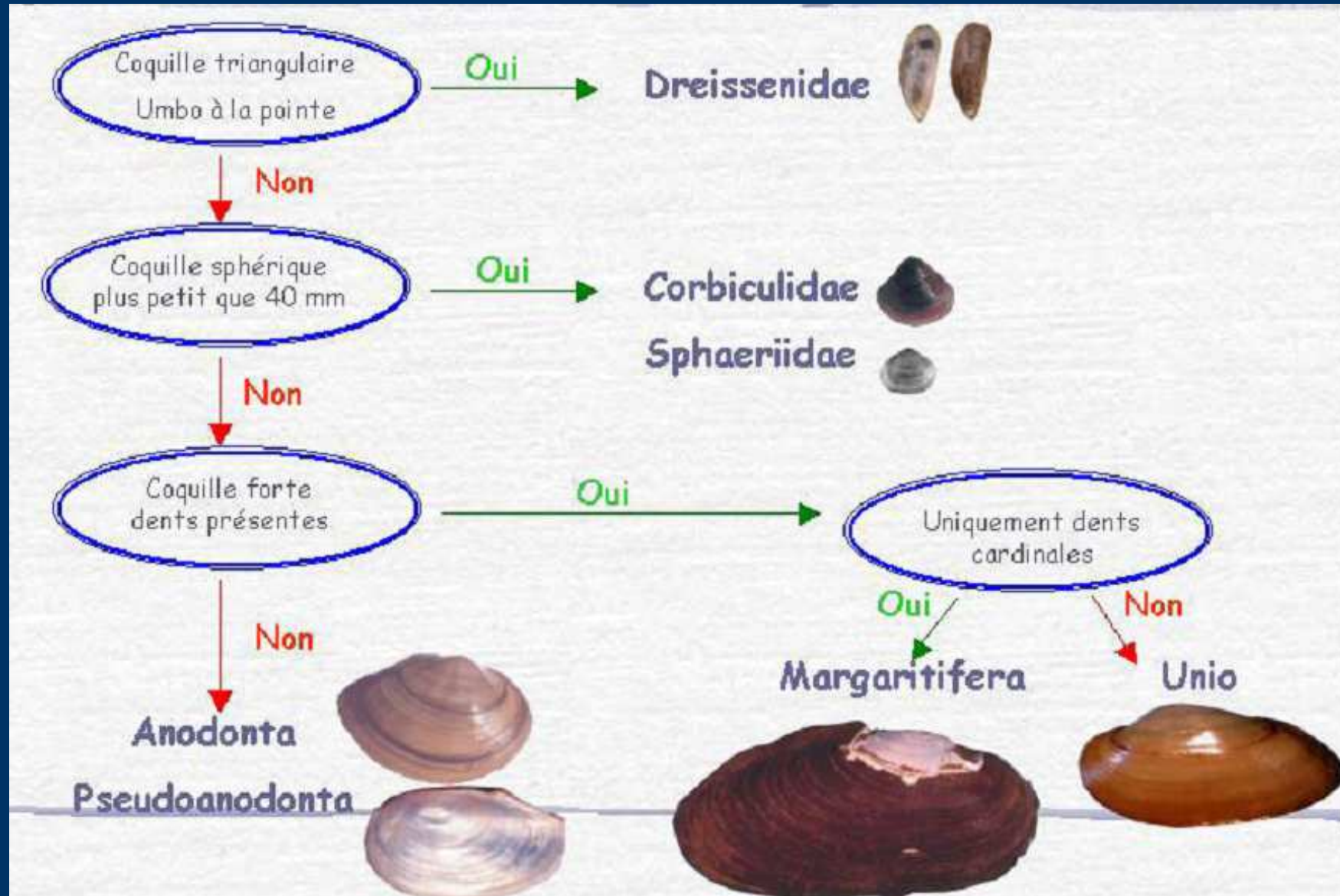
Montana State University

Bithynie = *Bithynia*

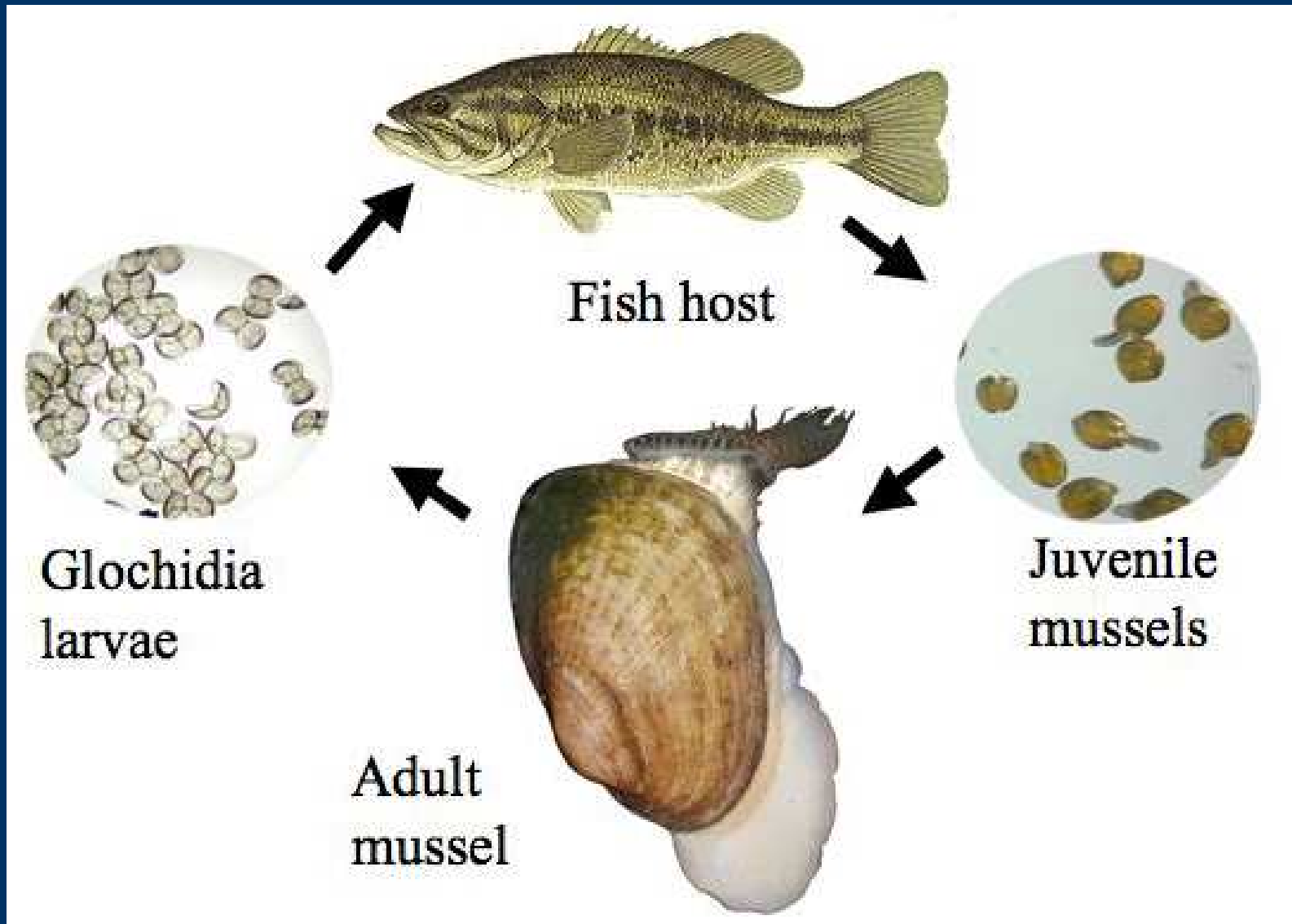
Néritine fluviatile =  
*Theodoxus fluviatilis*



# Mollusques lamelibranches



# Mollusques lamelibranches : cycle des unionidés



Moule zébrée :  
*Dreissena polymorpha*



Palourde asiatique :  
*Corbicula fluminea*



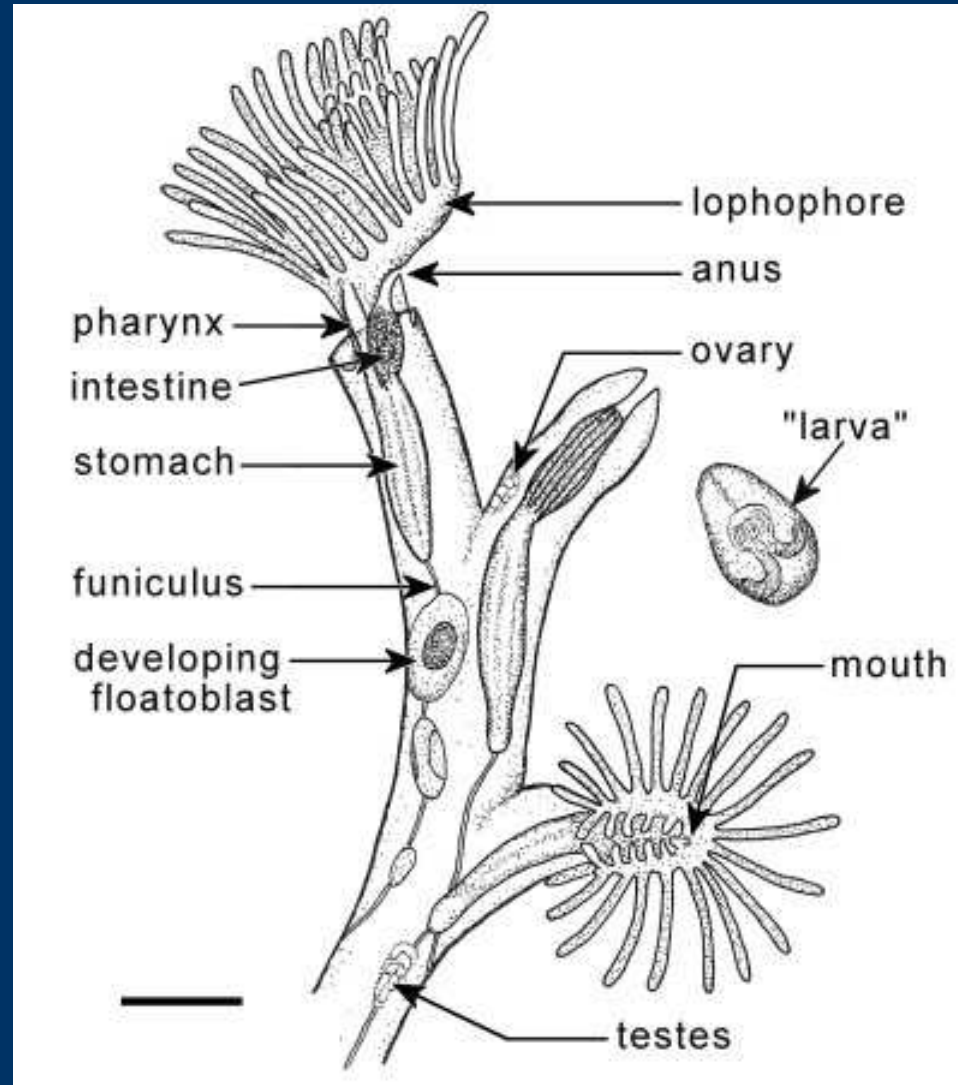


*Anodonta*

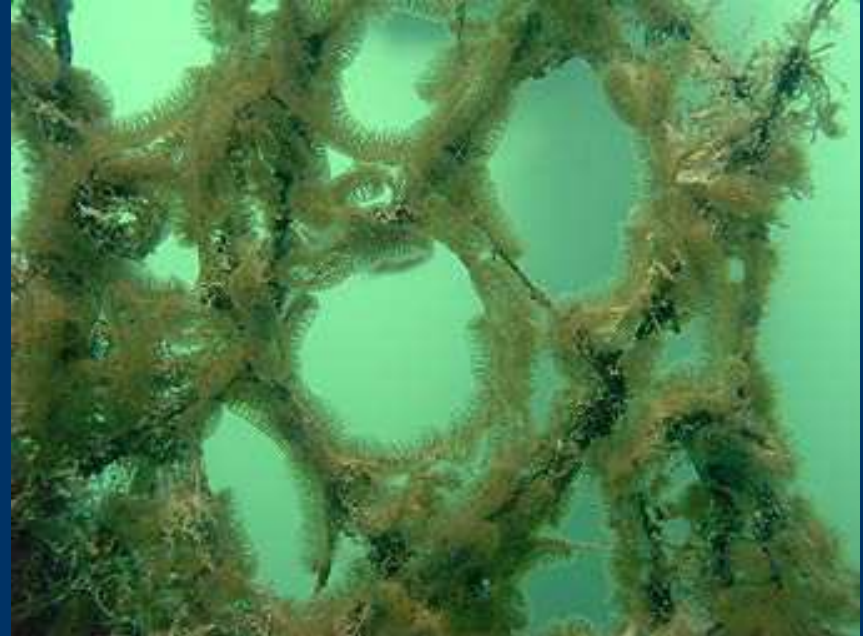
*Sphaerium*



# Bryozoaires

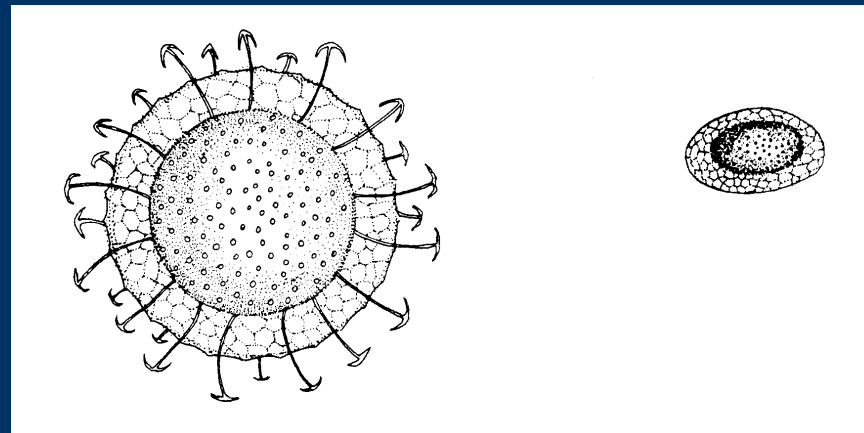


# Bryozoaires



*Cristatella mucedo*

# Bryozoaires





# Bryozoaires



*Plumatella repens*

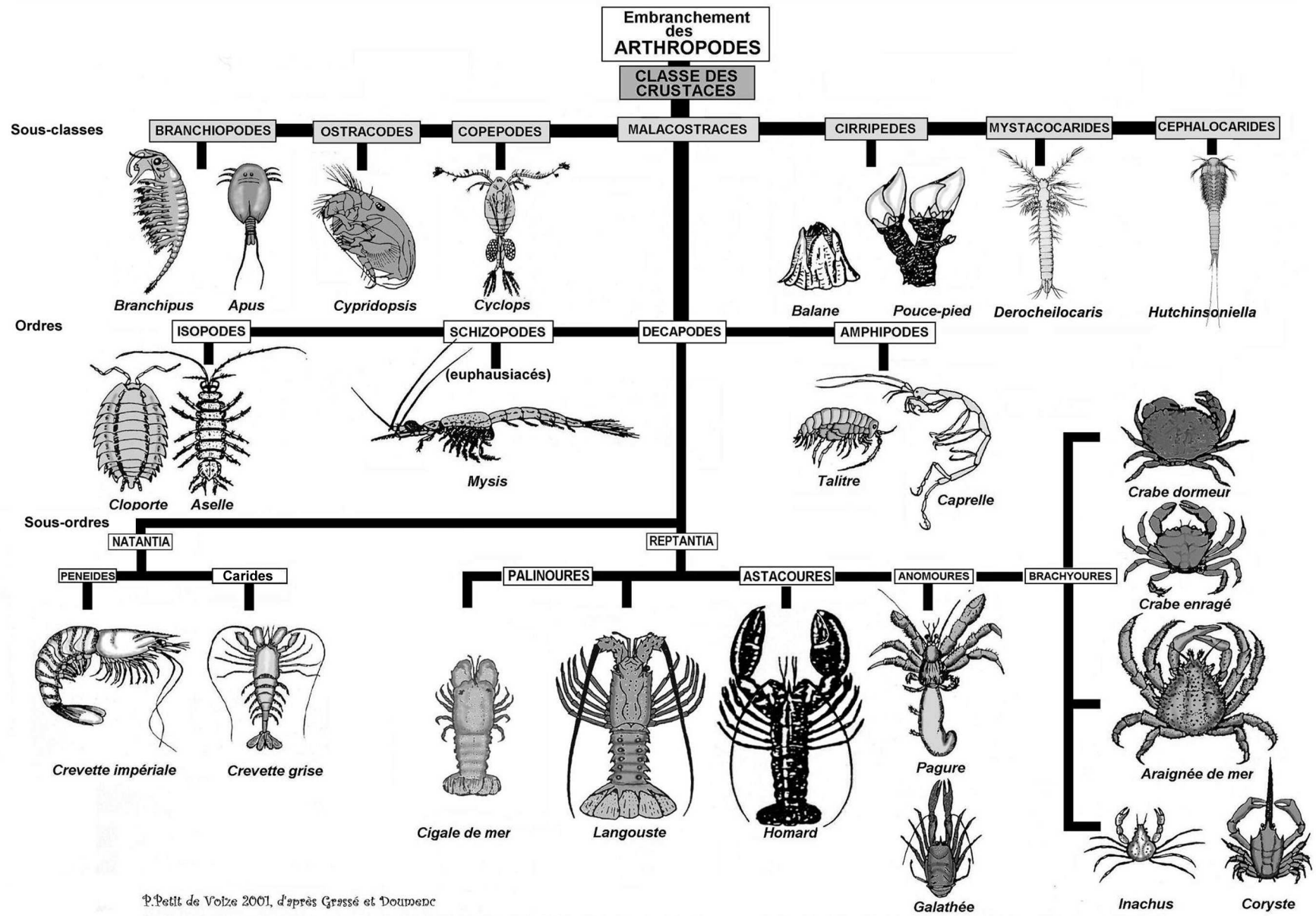
# Bryozoaires



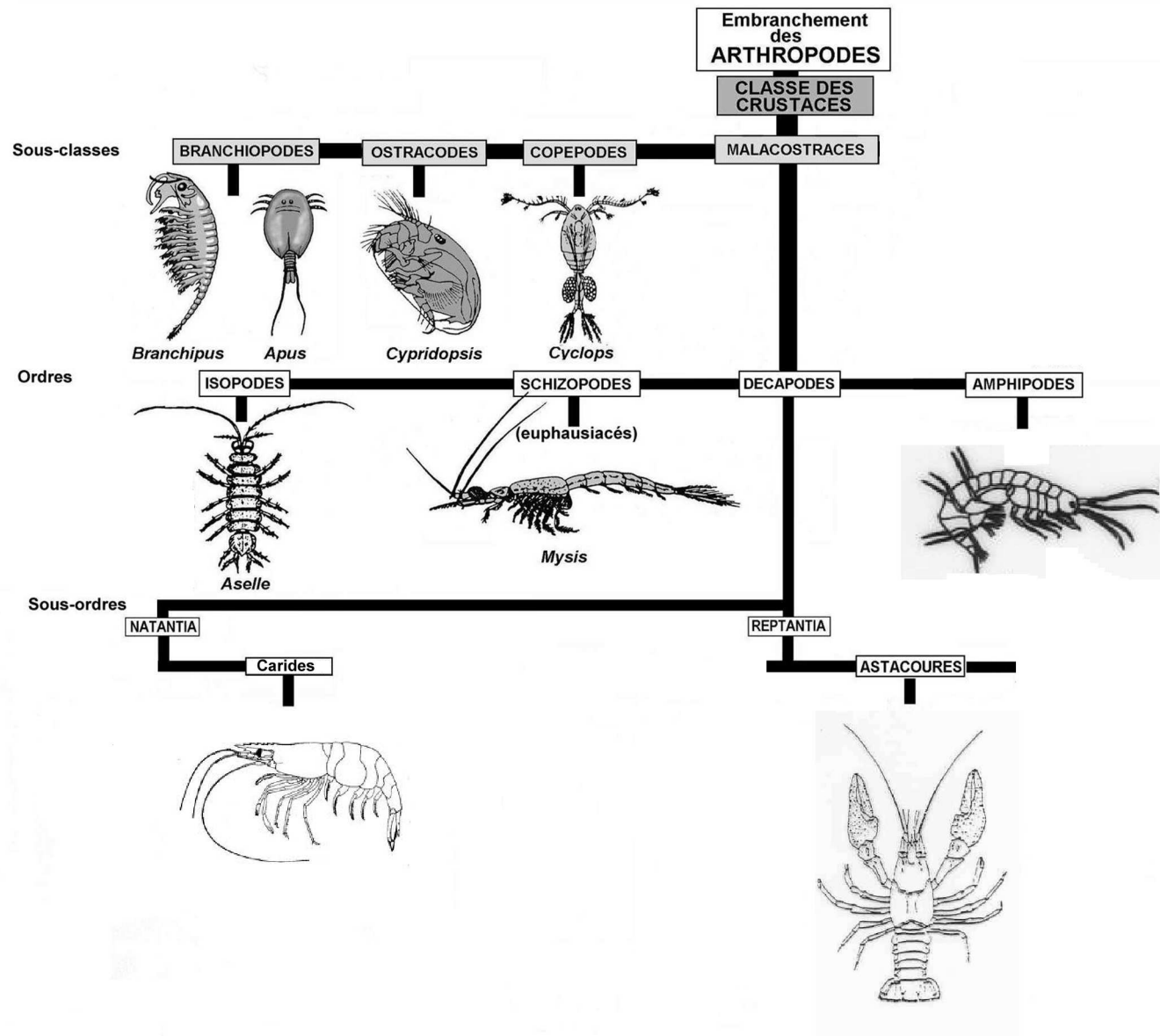
*Fredericella sultana*



*Pectinatella magnifica*



P. Petit de Volze 2001, d'après Grassé et Doumenc



# Crustacés



Aselle



Gammare

# Crustacés



Ecrevisse Américaine : *Orconectes limosus*

# Les écrevisses indigènes et exotiques en Région wallonne

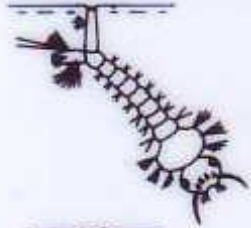


Association Theutoise  
pour l'Environnement



asbl

# Insectes



\* Larve de Moustique  
*Culicidae*



\* Pupa de Moustique  
*Culicidae*



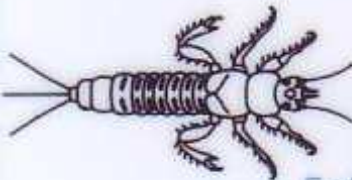
\*\* Larve de cristal  
*Chaoboridae*



\*\* Ver de vase  
*Chironomidae*



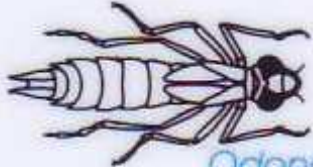
\*\*\* Larve de Sialis  
*Sialis lutaria*



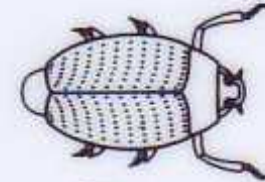
\*\* Nympe d'Ephémère  
*Ephemeroptera*



\*\*\* Nympe de Demoiselle  
*Odonata Zygoptera*



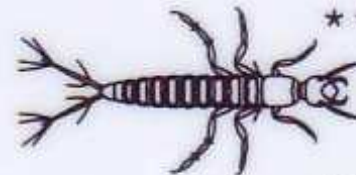
\*\*\* Nympe de Libellule  
*Odonata Anisoptera*



\* Gyrin adulte  
*Gyrinidae*



\*\*\* Dytique adulte  
*Dytiscidae*



\*\*\* Larve de Dytique  
*Dytiscidae*

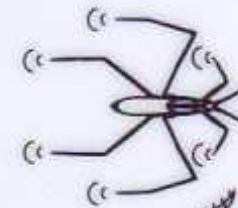


\*\*\* Larve de Phrygane  
*Trichoptera*



*Hydrometra stagnorum*

\*\* Hydromètre



\*\* "Araignée" d'eau  
*Gerris sp.*



\*\* Corise  
*Corixidae*



\*\* Notonecte  
*Notonecta glauca*

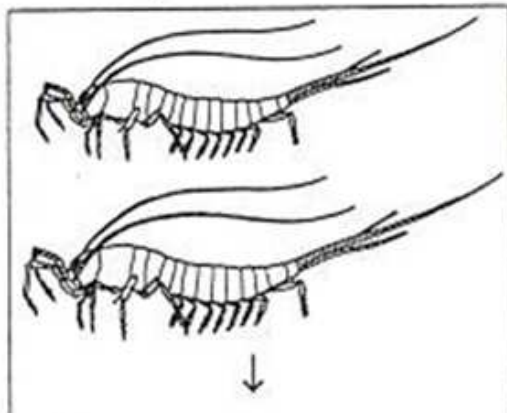
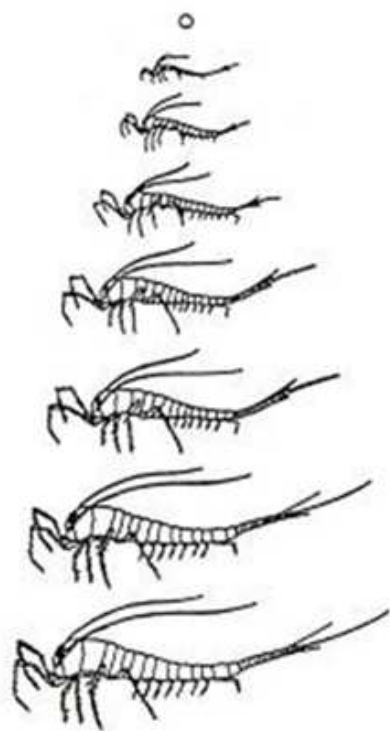


\*\*\* Nèpe aquatique  
*Nepa cinerea*



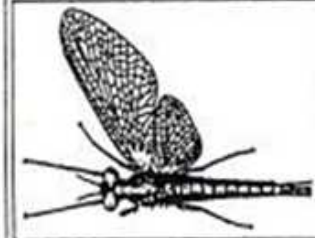
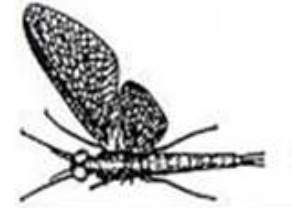
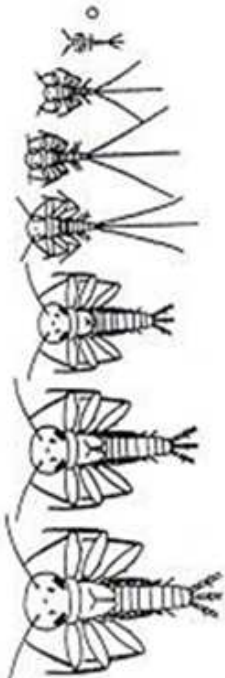
\*\*\* Ranâtre linéaire  
*Ranatra linearis*





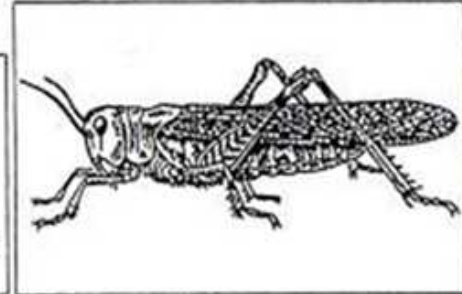
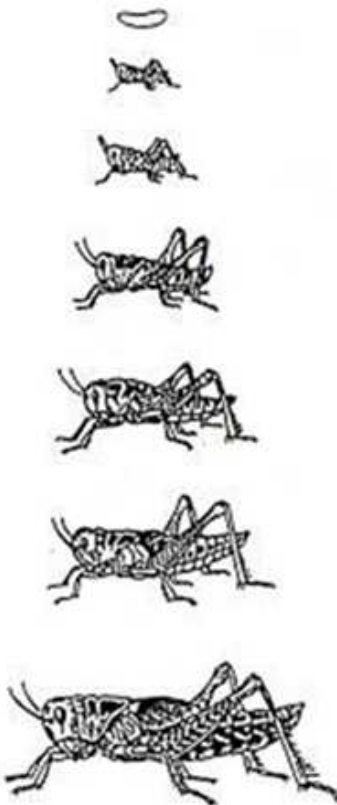
AMETABOLY  
(Archaeognatha)

**Amétaboles**

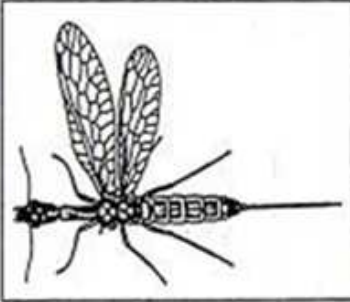
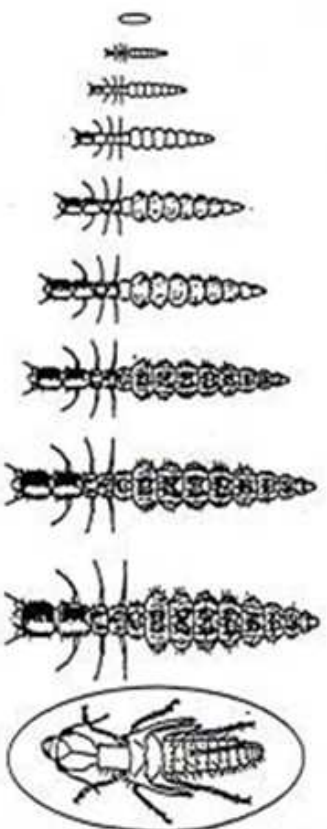


HEMIMETABOLY  
(Ephemeroptera)

**Hétérométaboles**



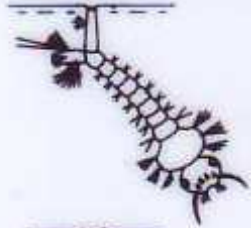
POLIOMETABOLY  
(Orthoptera)



HOLOMETABOLY  
(Raphidioptera)

**Holométaboles**

# Insectes



\* Larve de Moustique  
*Culicidae*



\* Pupa de Moustique  
*Culicidae*



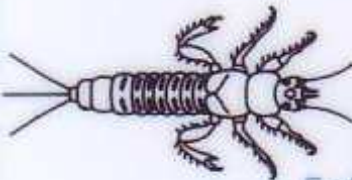
\*\* Larve de cristal  
*Chaoboridae*



\*\* Ver de vase  
*Chironomidae*



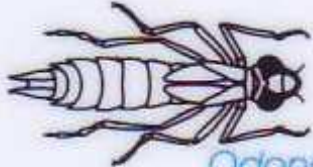
\*\*\* Larve de Sialis  
*Sialis lutaria*



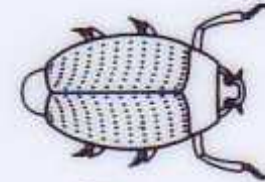
\*\* Nymphe d'Ephémère  
*Ephemeroptera*



\*\*\* Nymphe de Demoiselle  
*Odonata Zygoptera*



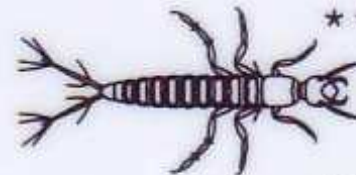
\*\*\* Nymphe de Libellule  
*Odonata Anisoptera*



\* Gyrin adulte  
*Gyrinidae*



\*\*\* Dytique adulte  
*Dytiscidae*



\*\*\* Larve de Dytique  
*Dytiscidae*

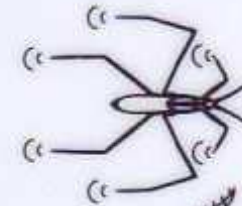


\*\*\* Larve de Phrygane  
*Trichoptera*



*Hydrometra stagnorum*

\*\* Hydromètre



\*\* "Araignée" d'eau  
*Gerris sp.*



\*\* Corise  
*Corixidae*



\*\* Notonecte  
*Notonecta glauca*

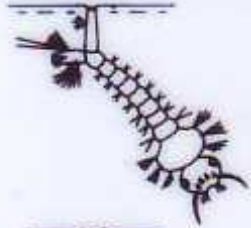


\*\*\* Nèpe aquatique  
*Nepa cinerea*



\*\*\* Ranâtre linéaire  
*Ranatra linearis*

# Insectes



\* Larve de Moustique  
*Culicidae*



\* Pupa de Moustique  
*Culicidae*



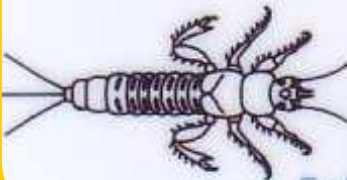
\*\* Larve de cristal  
*Chaoboridae*



\*\* Ver de vase  
*Chironomidae*



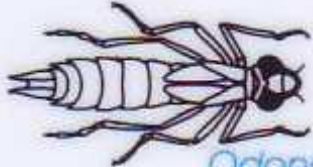
\*\*\* Larve de Sialis  
*Sialis lutaria*



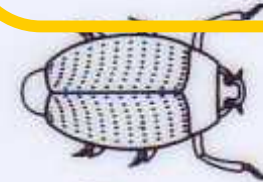
\*\* Nymphe d'Ephémère  
*Ephemeroptera*



\*\*\* Nymphe de Demoiselle  
*Odonata Zygoptera*



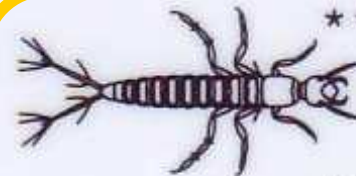
\*\*\* Nymphe de Libellule  
*Odonata Anisoptera*



\* Gyrin adulte  
*Gyrinidae*



\*\*\* Dytique adulte  
*Dytiscidae*



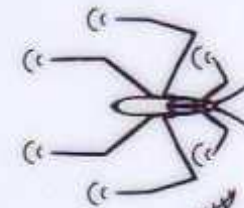
\*\*\* Larve de Dytique  
*Dytiscidae*



\*\*\* Larve de Phrygane  
*Trichoptera*



*Hydrometra stagnorum*



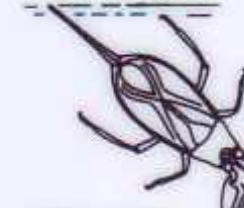
\*\* Hydromètre



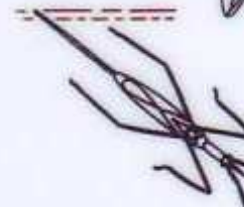
\*\* "Araignée" d'eau  
*Gerris sp.*



\*\* Notonecte  
*Notonecta glauca*

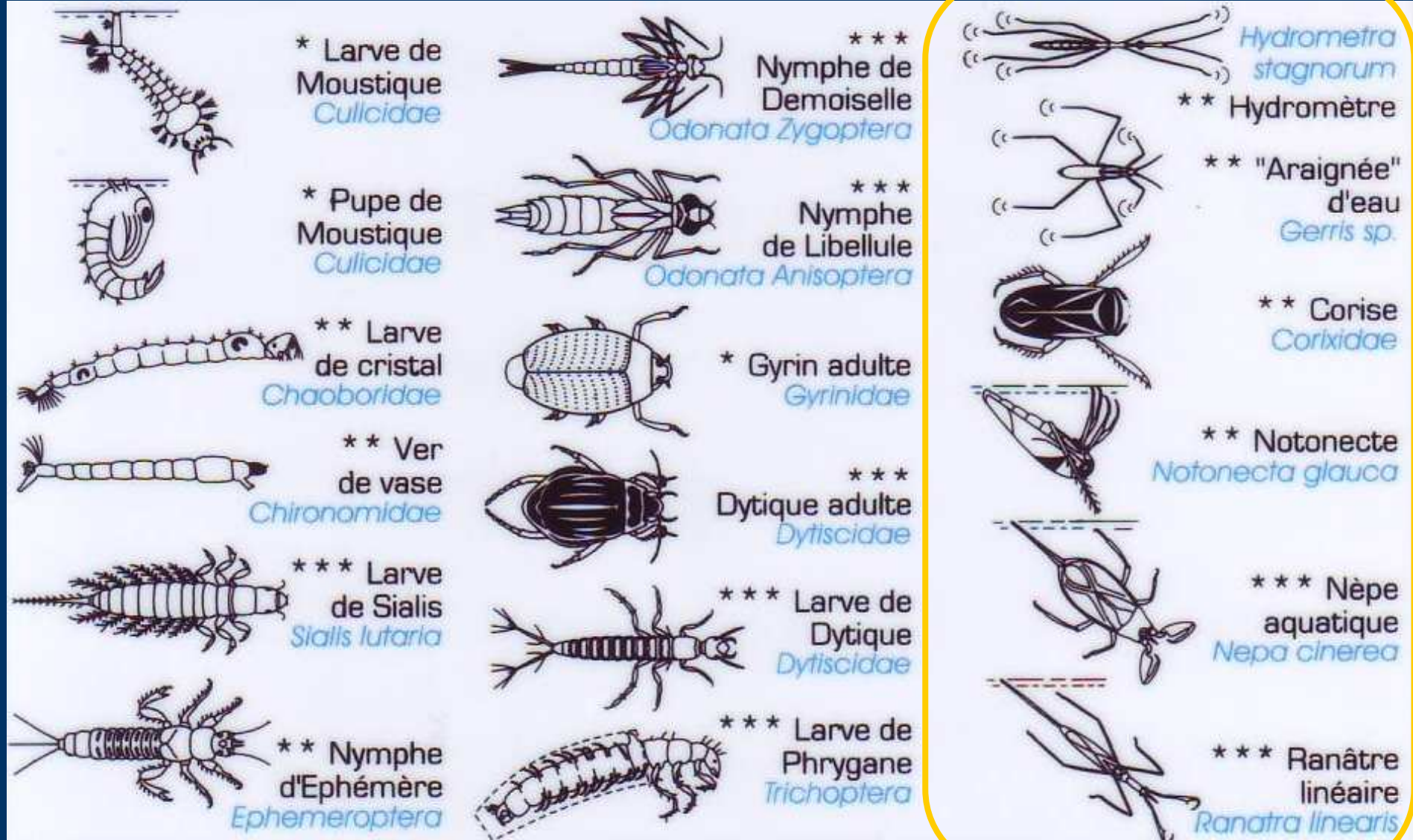


\*\*\* Nèpe aquatique  
*Nepa cinerea*

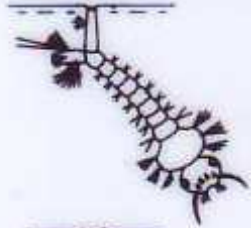


\*\*\* Ranâtre linéaire  
*Ranatra linearis*

# Insectes



# Insectes



\* Larve de Moustique  
*Culicidae*



\* Pupa de Moustique  
*Culicidae*



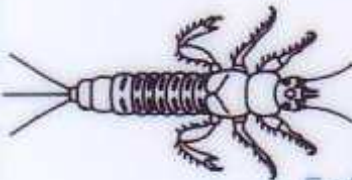
\*\* Larve de cristal  
*Chaoboridae*



\*\* Ver de vase  
*Chironomidae*



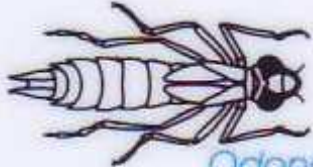
\*\*\* Larve de Sialis  
*Sialis lutaria*



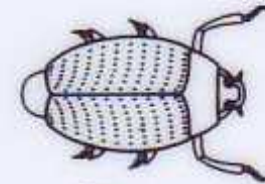
\*\* Nymphe d'Ephémère  
*Ephemeroptera*



\*\*\* Nymphe de Demoiselle  
*Odonata Zygoptera*



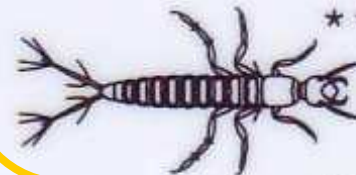
\*\*\* Nymphe de Libellule  
*Odonata Anisoptera*



\* Gyrin adulte  
*Gyrinidae*



\*\*\* Dytique adulte  
*Dytiscidae*



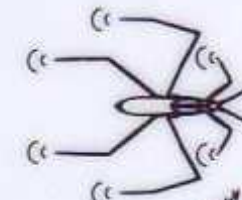
\*\*\* Larve de Dytique  
*Dytiscidae*



\*\*\* Larve de Phrygane  
*Trichoptera*



*Hydrometra stagnorum*



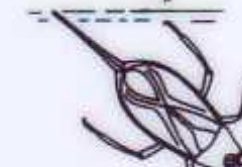
\*\* Hydromètre



\*\* "Araignée" d'eau  
*Gerris sp.*



\*\* Corise  
*Corixidae*



\*\* Notonecte  
*Notonecta glauca*



\*\*\* Nèpe aquatique  
*Nepa cinerea*



\*\*\* Ranâtre linéaire  
*Ranatra linearis*



Larve de Sialis



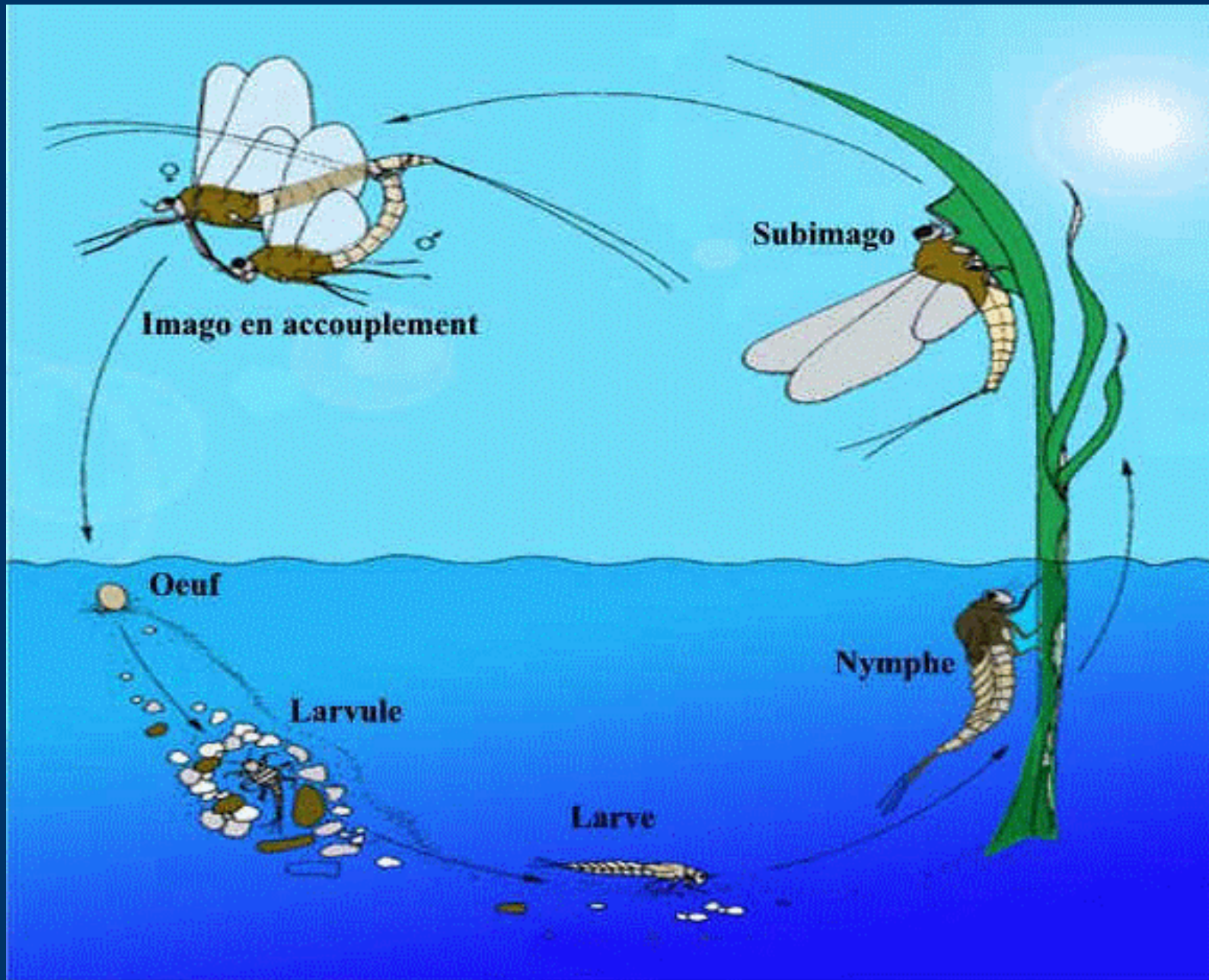
Adulte de Sialis



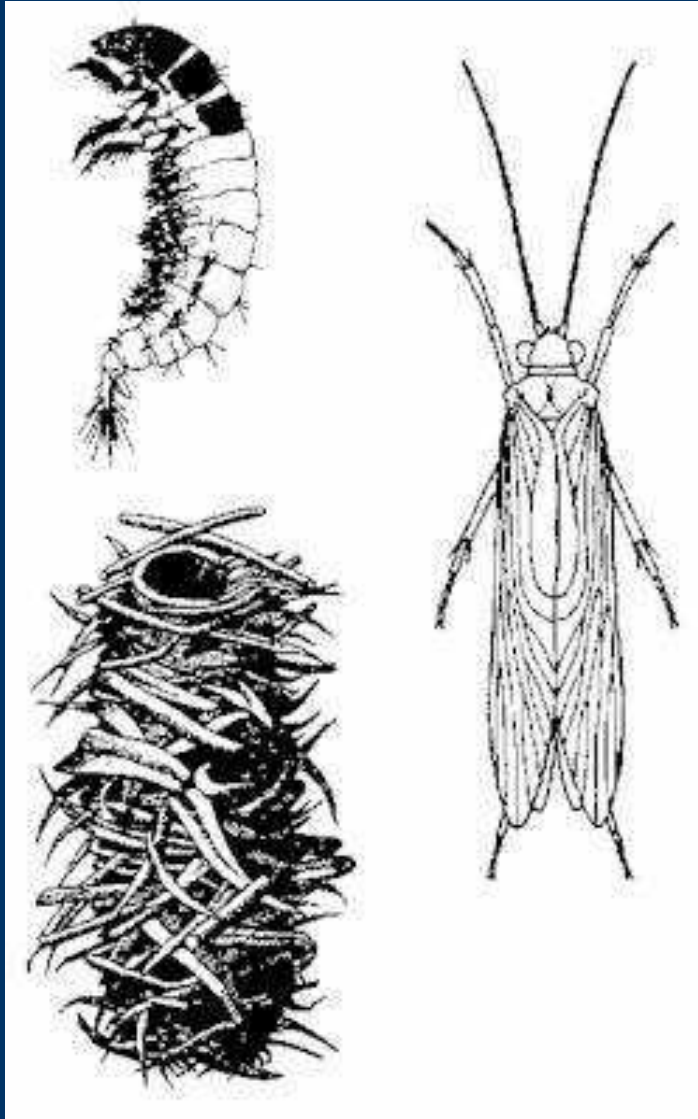
Nymphe d'éphémère



Ephémère adulte



# Insectes : trichoptères à fourreaux = phryganes





# Poissons



\*\* Flet  
*Platichthys flesus*



\*\*\* Anguille  
*Anguilla anguilla*



• \*\*\* Sterlet  
*Acipenser ruthenus*



• \*\*\* Silure glane  
*Silurus glanis*



\* Goujon  
*Gobio gobio*



\* Chabot  
*Cottus gobio*



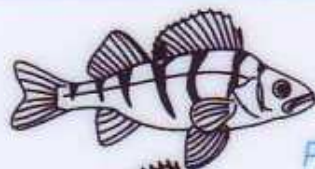
\* Loche franche  
*Barbatula barbatula*



• \*\*\* Truite arc-en-ciel  
*Oncorhynchus mykiss*



• \*\*\* Brochet  
*Esox lucius*



\*\* Perche  
*Perca fluviatilis*



• \* Grémille  
*Gymnocephalus cernuus*



• \*\*\* Sandre  
*Sander lucioperca*



• \*\* Perche-soleil  
*Lepomis gibbosus*



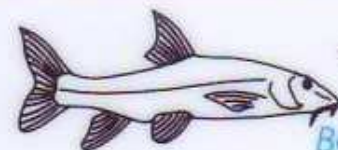
• \*\*\* Carpe commune  
*Cyprinus carpio carpio*



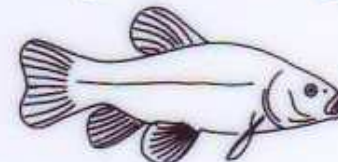
• \*\*\* Carpe miroir  
*Cyprinus carpio carpio*



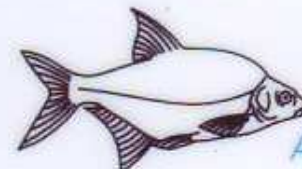
• \*\*\* Carpe cuir  
*Cyprinus carpio carpio*



\*\* Barbeau fluviatile  
*Barbus barbus*



\*\* Tanche  
*Tinca tinca*



\*\* Brème commune  
*Abramis brama*



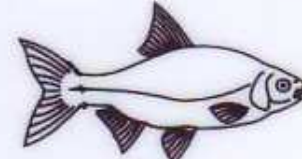
\* Vairon  
*Phoxinus phoxinus*



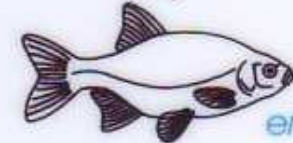
\* Ablette  
*Alburnus alburnus*



\*\* Chevaine  
*Leuciscus cephalus*



\*\* Gardon  
*Rutilus rutilus*

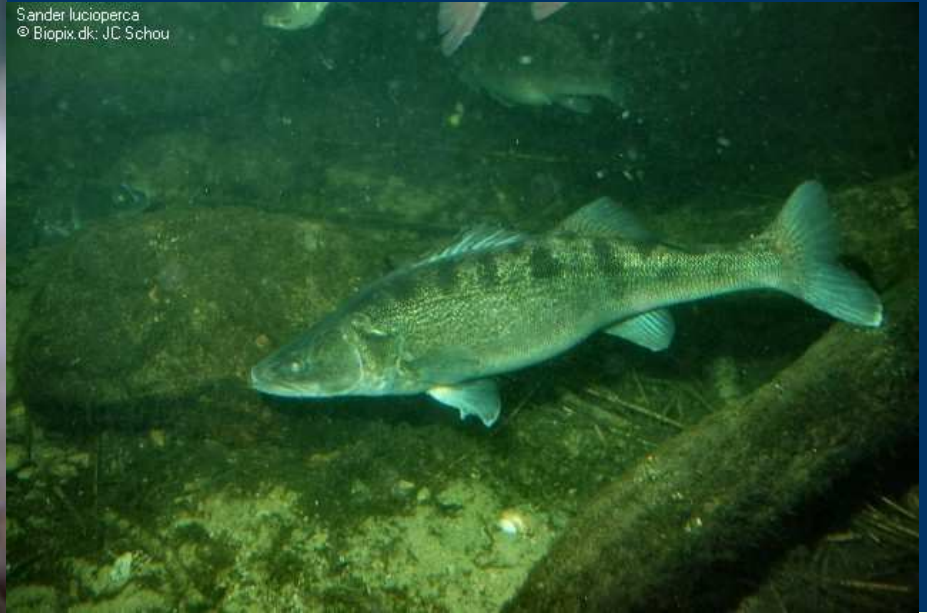


\*\* Rotengle  
*Scardinius erythrophthalmus*





Sander lucioperca  
© Biopix.dk: JC Schou

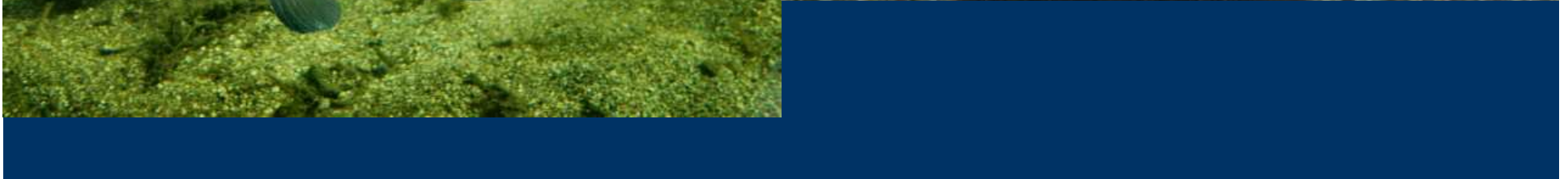


(C) Mat Vestjens - Agua dulce

Grémille (*Gymnocephalus cernuus*)  
© Biopix.dk; JC Schou



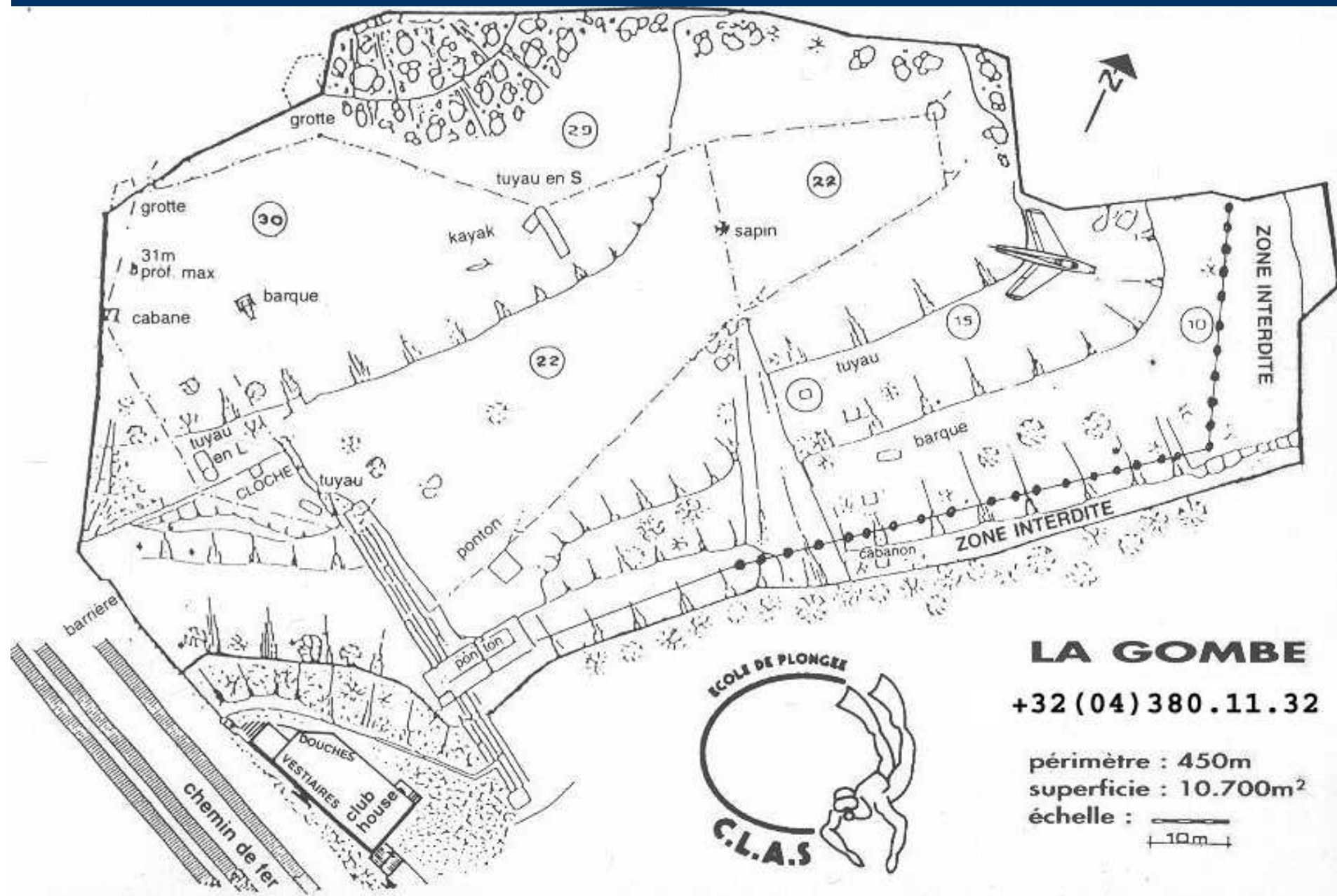












## LA GOMBE

+32 (04) 380.11.32

périmètre : 450m  
 superficie : 10.700m<sup>2</sup>  
 échelle : 